

Specialized safety flooring products and surface technologies.

Specialty Steel introduces SLIPNOT, a metal-to-metal slip resistant surface for safety flooring.

Safety for every step you take!

SLIPNOT stands for specialized safety flooring products and surface technologies, covering the walkways, entryways, stairs, ladders and more, where you live, work and play. SLIPNOT transforms potentially hazardous spaces like food- and beverage manufacturing plants and highly trafficked office buildings and retail spaces into safe and efficient environments.

Much to the relief of safety managers and building owners everywhere, over 90% of trips, slips and falls can be avoided once SLIPNOT is installed.



Metal substrate material consists of

Carbon Steel

ASTM A36 / S235JR+AR

ASTM A572 Gr. 50 / S355J2+N

Stainless Steel

AISI 304

AISI 316

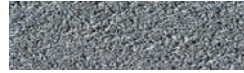
Aluminum

EN AW 5052

EN AW 6061

SLIPNOT coatings are available in three grades

Courseness	Grade 1 - Fine	Grade 2 - Medium	Grade 3 - Coarse
Carbon Steel	x	x	x
Stainless Steel	x	x	-
Aluminum	x	x	-
Peak to valley depth	0,254 – 0,305 mm	0,508 – 0,635 mm	0,813 – 0,965 mm



Metal to metal



Steel on Steel

ASTM A36 / S235JR+AR or ASTM A572 Gr. 50 / S355J2+N

Surface hardness \geq 55 HRC

Coefficient of friction $>$ 65 (ASTM E303-93 / EN 13036-4 SRT Type 96)



Stainless Steel on Stainless Steel

AISI 304 or AISI 316

Surface hardness \geq 55 HRC

Coefficient of friction $>$ 65 (ASTM E303-93 / EN 13036-4 SRT Type 96)



Aluminum on Aluminum

EN AW 5052 or EN AW 6061

Coarseness: fine or medium

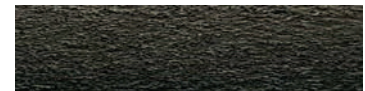
Coefficient of friction $>$ 65 (ASTM E303-93 / EN 13036-4 SRT Type 96)

Surface finishes

Mill finish



Painted



Powder-Coated



Application examples



Engineered parts with SLIPNOT coating

Gratings, perforated sheets, ladder rungs, stair nosing- and treads and more.

Standard sheet dimensions from stock

3,0 x 1500 x 3000 mm
5,0 x 1500 x 3000 mm

Contact your Specialty Steel representative for more information.

All information supplied by Vogel Stahl BV, also acting under its registered trade name Specialty Steel Sheet and Plate, in relation to its products, the characteristics and properties of its products and their possible application whether in the form of data, recommendations or otherwise, as contained in this publication has been compiled with care. However, Vogel Stahl BV gives no warranties of any kind, expressed or implied, and Vogel Stahl BV assumes no liability whatsoever in respect of application, processing, use of, or reliance on the aforementioned information or products or any consequence thereof.